

Designing Smart Spaces with Meraki



The Meraki Community

Connect with Meraki aficionados around the world

Training & Certification

Discover free courses and resources to help you further your Meraki knowledge and expertise

Contests & Challenges

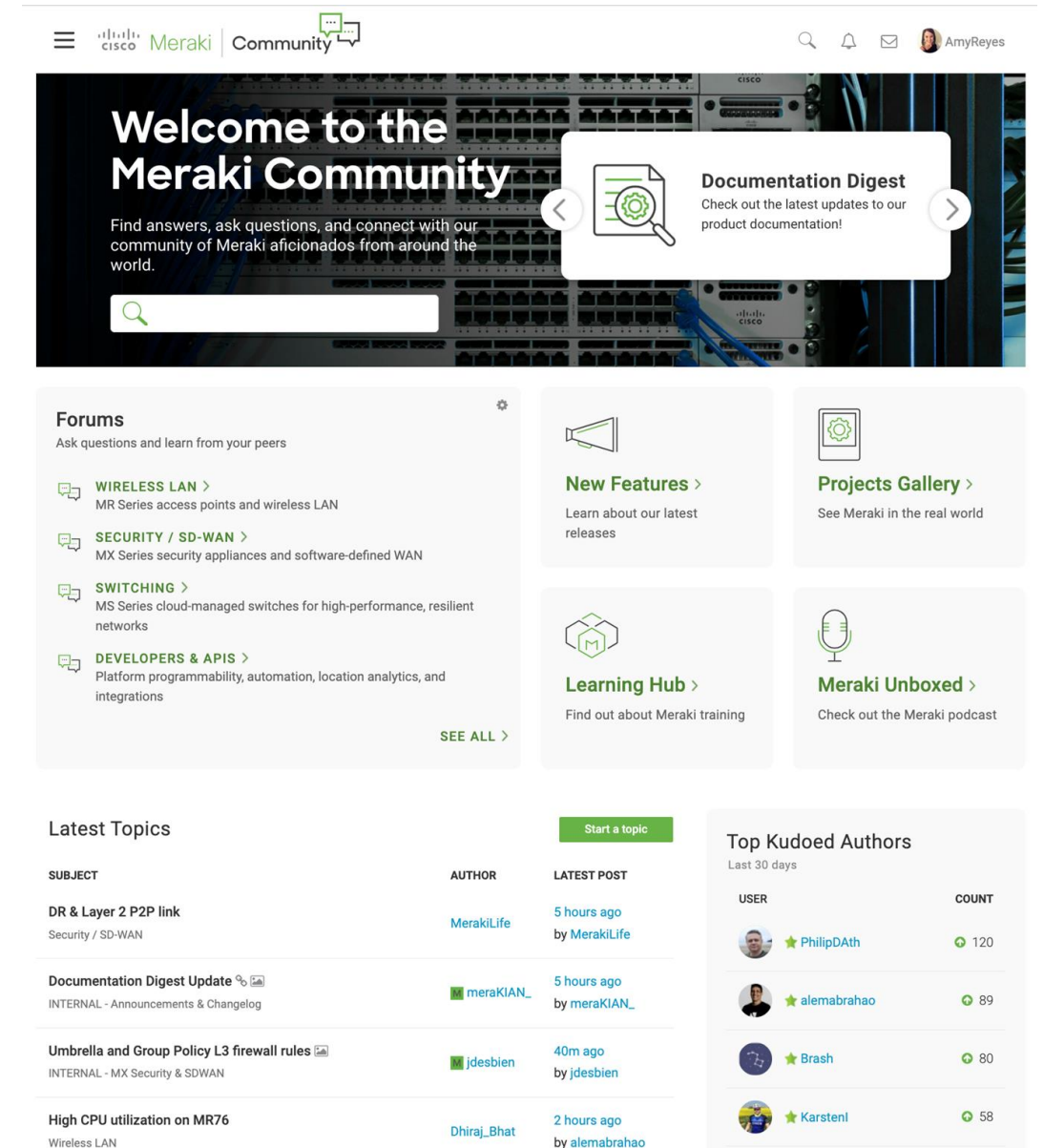
Have fun and win sweet Meraki swag in our monthly contests

Feature Announcements

Get the latest product news and feature updates

Technical Forums

Ask questions and engage in discussions with other experts



The screenshot shows the Meraki Community website. At the top, there's a navigation bar with the Cisco Meraki logo, a 'Community' link with a speech bubble icon, and user profile information for 'AmyReyes'. Below the navigation bar is a large hero section with a background image of server racks. The hero section contains a 'Welcome to the Meraki Community' heading, a subheading 'Find answers, ask questions, and connect with our community of Meraki aficionados from around the world.', a search bar, and a 'Documentation Digest' callout box. Below the hero section, there are several content blocks: 'Forums' with a list of topics (Wireless LAN, Security / SD-WAN, Switching, Developers & APIs) and a 'SEE ALL >' link; 'New Features >' with a megaphone icon; 'Projects Gallery >' with a gear icon; 'Learning Hub >' with a book icon; and 'Meraki Unboxed >' with a microphone icon. At the bottom, there are two tables: 'Latest Topics' and 'Top Kudoed Authors'.

SUBJECT	AUTHOR	LATEST POST
DR & Layer 2 P2P link <small>Security / SD-WAN</small>	MerakiLife	5 hours ago by MerakiLife
Documentation Digest Update 📄 <small>INTERNAL - Announcements & Changelog</small>	merakIAN_	5 hours ago by merakIAN_
Umbrella and Group Policy L3 firewall rules 📄 <small>INTERNAL - MX Security & SDWAN</small>	jdesbien	40m ago by jdesbien
High CPU utilization on MR76 <small>Wireless LAN</small>	Dhiraj_Bhat	2 hours ago by alemabrahao

USER	COUNT
PhilipDath	120
alemabrahao	89
Brash	80
KarstenI	58

Agenda

- Understanding Smart Space opportunities
- Understanding Cisco Meraki's cloud-first platform
- Examining the Meraki Marketplace
- Designing Smart Spaces
- Initiating a Smart Space project

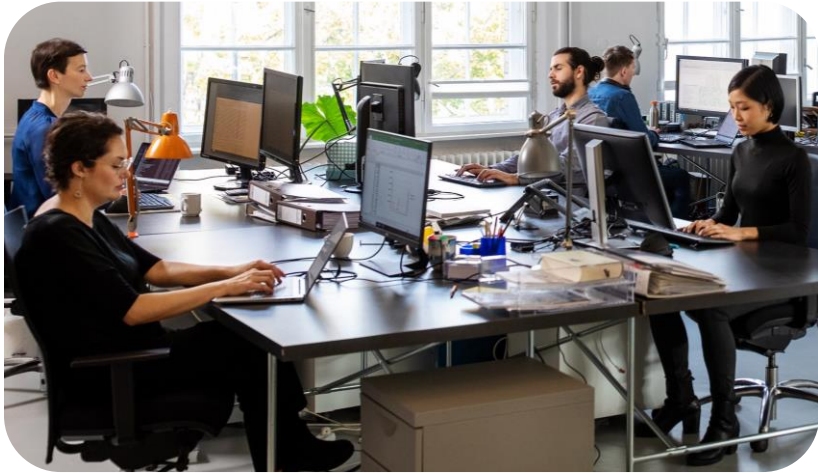
Understanding Smart Space opportunities





**People's expectations have changed,
and so should we.**

Changing expectations



OFFICE SPACES

EMPLOYEES

68%

do not feel completely safe
going back into workspaces

[Honeywell, 2021]



COMMERCIAL & PUBLIC SPACES

CUSTOMERS & END USERS

80%

consider the experience as
important as the products

[Salesforce Research]



RESTRICTED SPACES

IT LEADERS

50%

prioritize employee and
customer experience

[Rackspace Technology]

Slido poll

What do you value the most in Smart Spaces?

Select your answer.

Smart workspaces

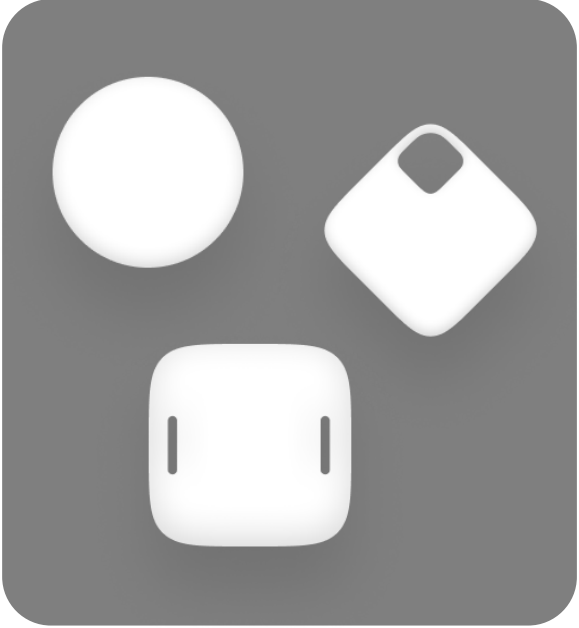
Bringing the network and experiences together



Cisco and Meraki infrastructure



Third party sensors



Rich maps



Understanding Meraki's cloud- first platform



Powered by the Meraki platform

The largest cloud platform in networking built for scale and intelligence



730K+
Customers



99.99%
Cloud SLA

4+
MILLION

Customer
networks

12+
MILLION

Meraki devices
online

190+

Active
countries

8+
BILLION

Monthly external
API calls

340+
MILLION

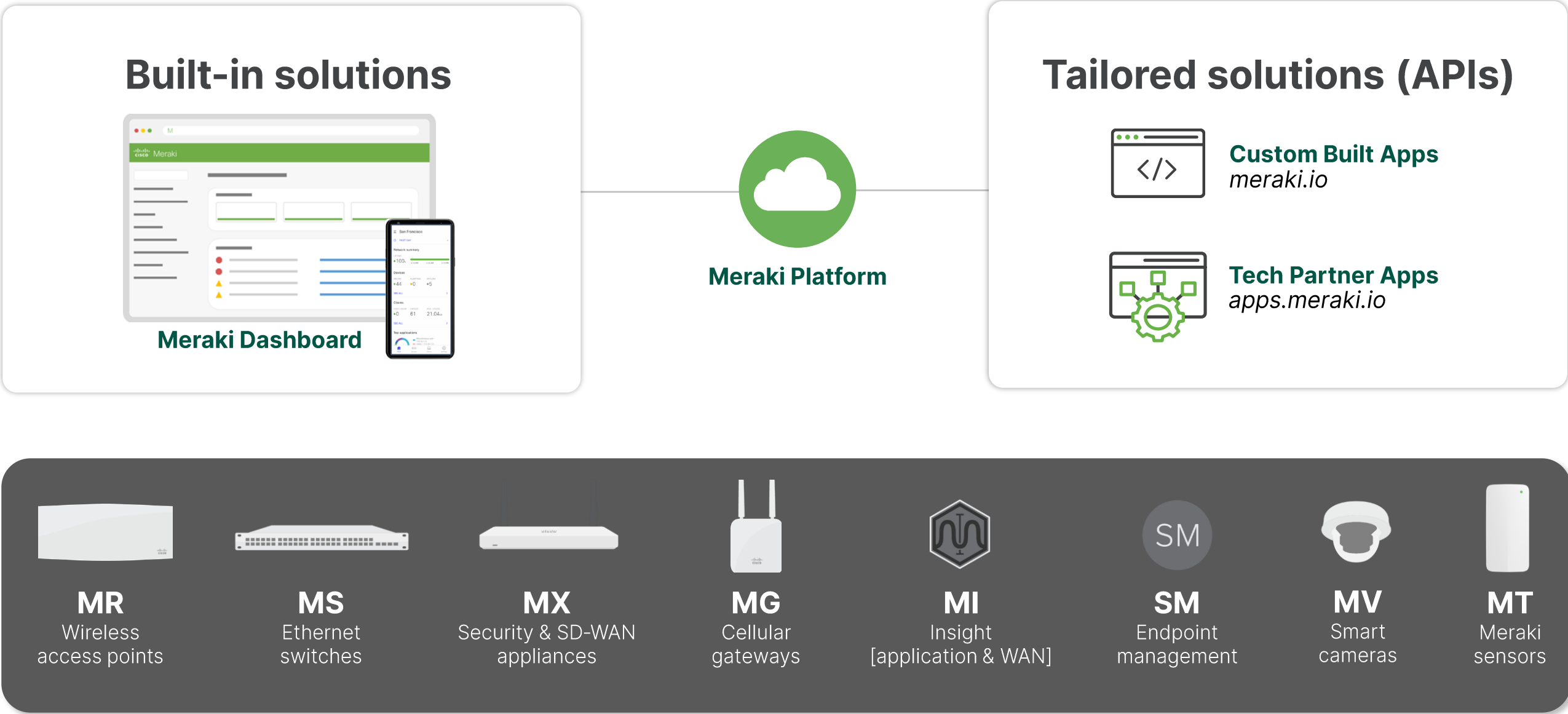
Daily end-
user devices

3.4+
MILLION

Active API
users

Born in the cloud, growing daily, and
trusted everywhere

A foundation for IT and IoT



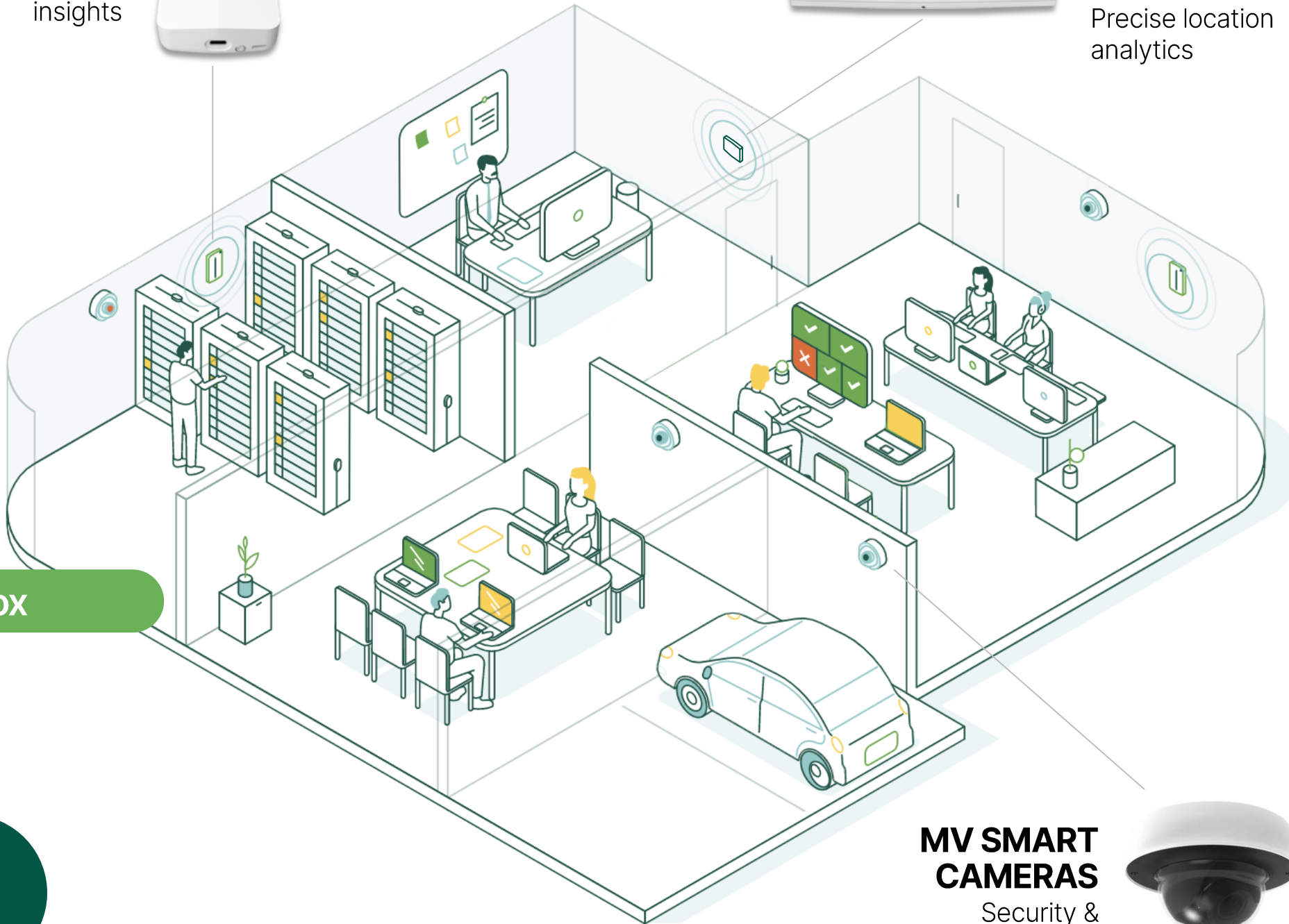
The foundation for any Smart Space

MR, MV, and MT are your smart space toolbox

MT SENSORS
Key environmental
insights



**MR ACCESS
POINTS**
Precise location
analytics



**MV SMART
CAMERAS**
Security &
analytics



MV cameras

A smarter way to build safe environments



Meraki MV **smart** cameras

Cloud-managed physical security designed to give you more



Scalable

- On-camera storage and processing
- Cloud management
- No NVR, VMS, or plug-ins

Secure

- Hardware security
- Video encryption
- Automatic updates
- Secure user accounts

Agile access

- Local and remote viewing
- Browser-based dashboard
- Mobile app

Smart

- Motion analytics
- People, vehicle, siren, and alarm detection
- Audio analytics

MV camera indoor portfolio

FLEXIBLE, LOW-COST



MV2

Wide FoV
1080P video
No on-camera storage

MINI INDOOR DOME



MV12 series

Wide or narrow FoV
1080P video
128-256GB storage

360° FISHEYE



MV32

360° fisheye
8.4MP sensor
256GB storage

VARIFOCAI INDOOR DOME



MV22 series

Varifocal lens
Wide to narrow FoV
Up to 4MP video
256-512GB storage

MV camera outdoor portfolio

**VARIFOCAI
OUTDOOR DOME**

**MORE DETAIL,
LONGER STORAGE**

**LONG-RANGE,
HIGH-DETAIL**

**HIGH RESOLUTION,
FLEXIBLE STORAGE**

**PANORAMIC AREA
CAPTURE**



MV72

36-112° FoV
1080P video
256GB storage

MV72X

36-112° FoV
4MP video
512GB storage

MV52

12-37° FoV
4K video
1TB storage

MV63 series

Fixed lens (102° FoV)
Up to 4K video
256GB-1TB storage

MV93 series

360° fisheye
Up to 12.4MP sensor
256GB-1TB storage

MT sensors

Monitoring environmental quality with IoT



Business resiliency starts with MT

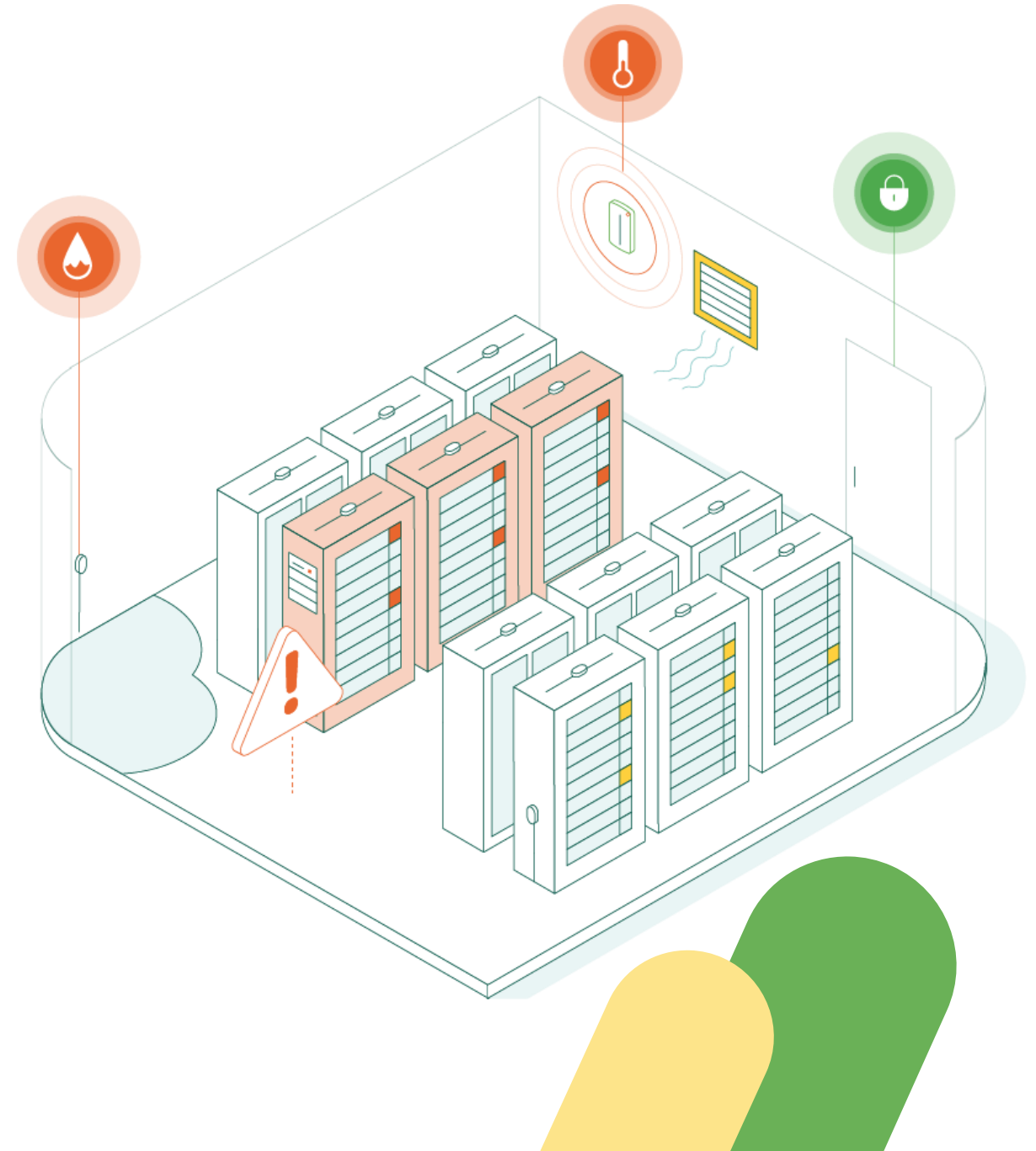
Real-time monitoring and alerts prevent disruptions

Maximize equipment uptime

Prevent hardware damage

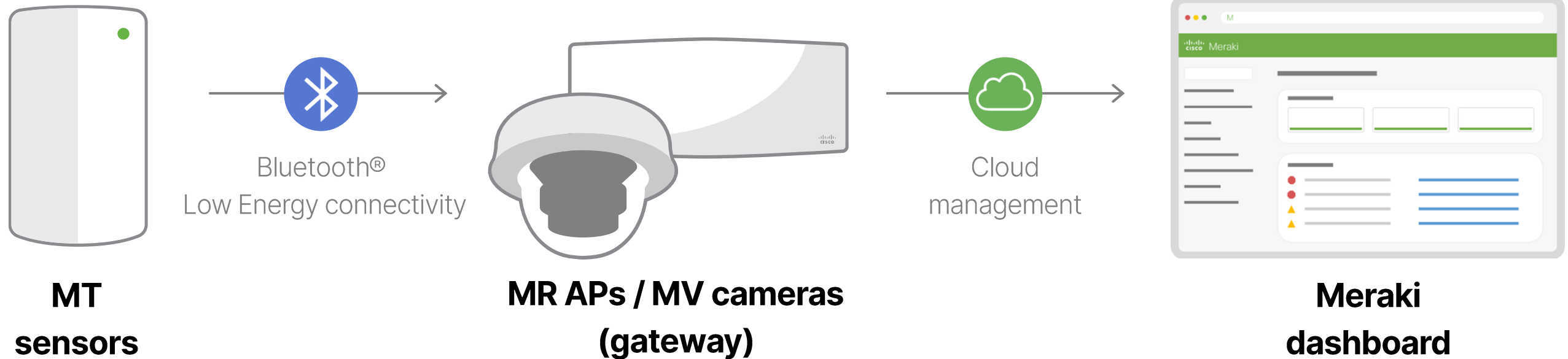
Prevent unauthorized access

Reduce energy consumption



Focus on your business, not installation

Rapid deployments powered by the cloud-first Meraki platform



Sensors for every business need

IT INFRASTRUCTURE MONITORING

COLD STORAGE

SAFE ENVIRONMENTS

AUTOMATION



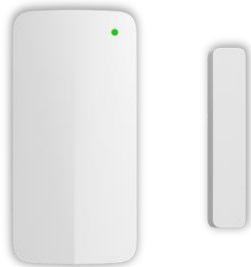
MT10

Temperature and humidity



MT12

Water leak



MT20

Door access (intrusion)



MT11

Temperature probe



MT14

Indoor air quality



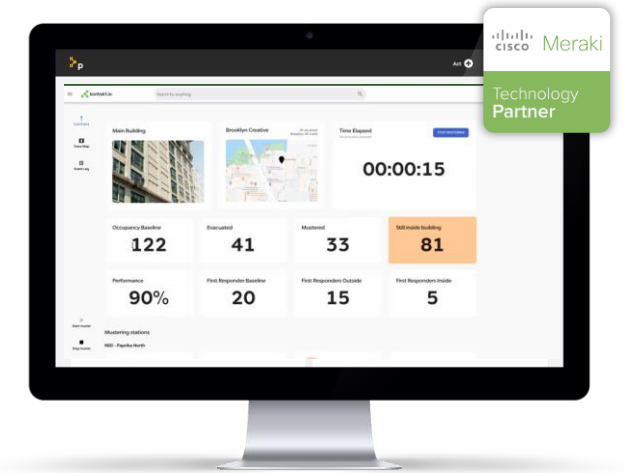
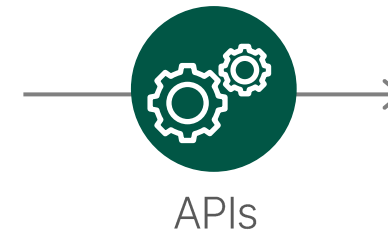
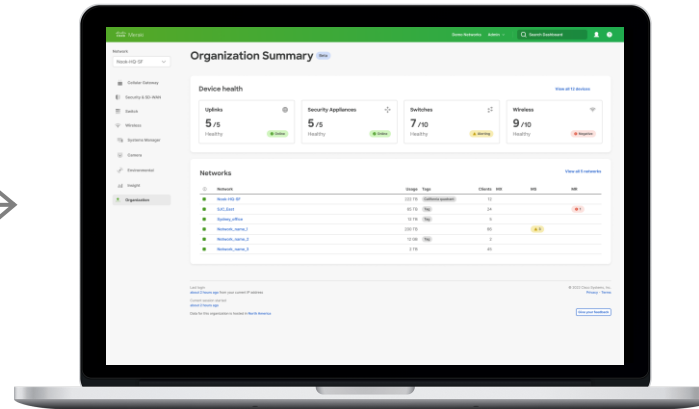
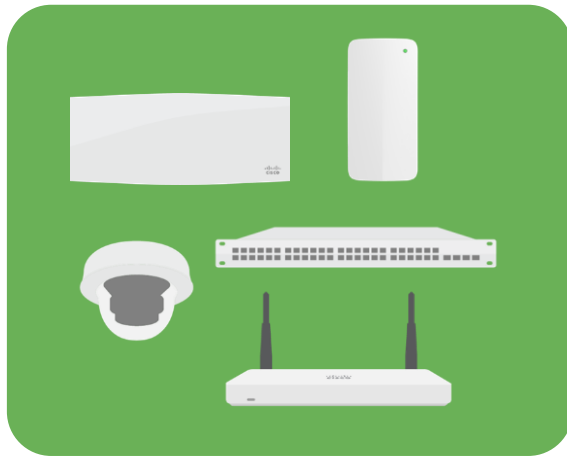
MT30

Smart automation button

Examining the Meraki Marketplace



API integration and benefits



Easy to use

- Fast to deploy
- No coding experience required

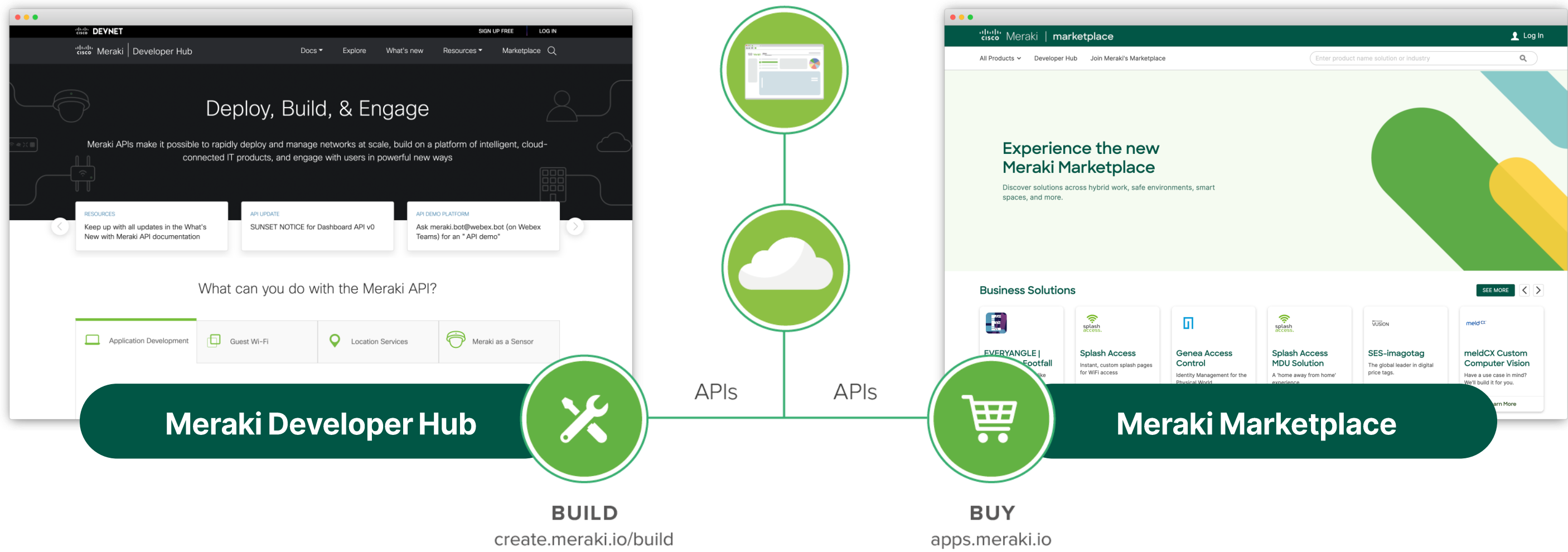
Cross functional

- Additional insight from already available data
- Stickier solution

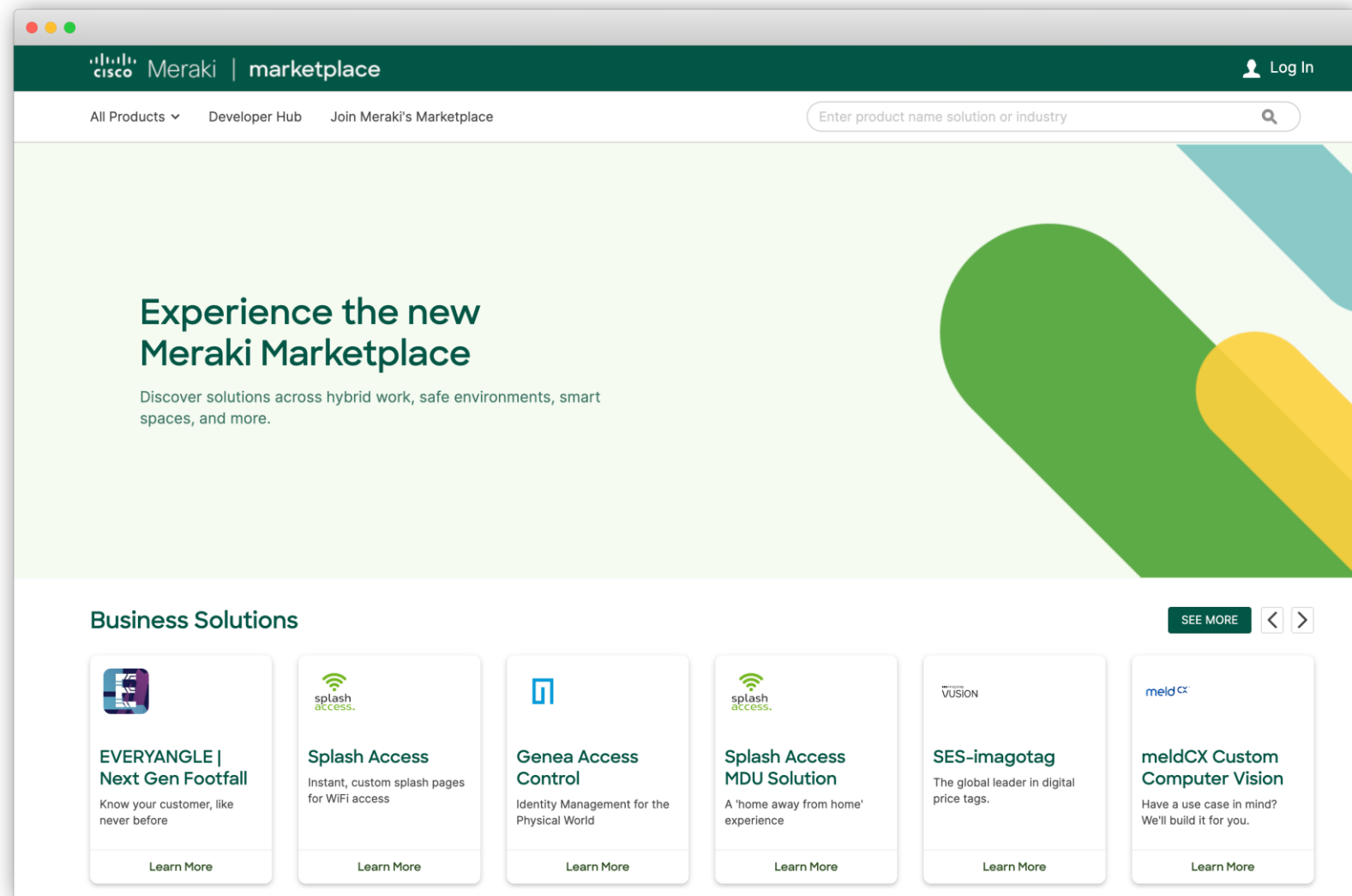
Leveraged at any time

- Add more value to a new project
- Improve an already deployed infrastructure

Two teams: one strategy



What is in the Meraki Marketplace?



An exclusive **catalog of ecosystem partners** that showcases **applications developed on top of the Meraki platform**

Types of solutions



**Smart
occupancy**



**Marketing &
trends**



**Investment
protection**



**Security &
safety**

Slido poll

Which type of solution interests you the most?

Select your answer.

Any space, different needs, many solutions

Safe occupancy

Space utilization

Obstruction detection

Zone engagement

Remote control

Contact tracing

IoT sensors

Footfall analytics

Power consumption

Hot desking

Custom CV

Wayfinding

Air quality control

Asset tracking

Access control

People tracing

Loss prevention

Conversion rate

Remote monitoring

License plate recog.

Customer experience

Augmented security

Building system man.

Digital signage

Designing Smart Spaces



Office spaces

CHALLENGES

- **Monitoring, assessing, and responding** to physical conditions
- **Gaining insights from data** that's currently nonexistent or hard to find

OPPORTUNITIES

- **Optimize workspaces** by maximizing resource usage
 - Ensure safety and security
 - Personalize communications and engagements



Commercial and public spaces

CHALLENGES

- **Accessing insightful customer data** in physical and network security layers operating independently
- **Establishing secure** and **reliable** network performance

OPPORTUNITIES

- Implement a unified solution to **increase and improve experiences**
 - Proactively manage environmental changes
 - Ensure safety and security



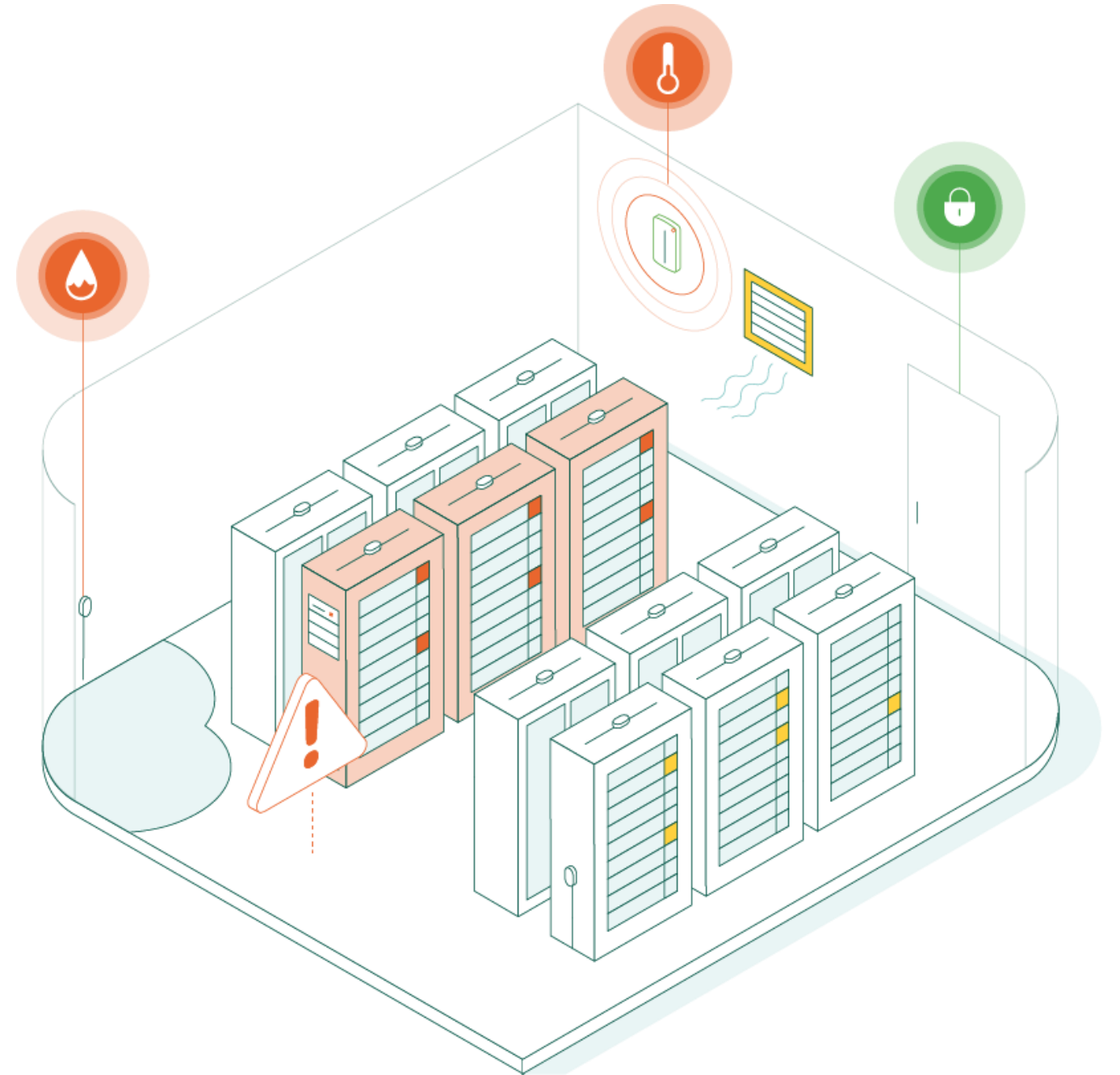
Restricted spaces

CHALLENGES

- **Reacting** when environmental conditions impact or threaten equipment performance
- **Eliminating downtime** and business disruption

OPPORTUNITIES

- **Proactively manage environmental changes** with automations
 - Reduce energy consumption
 - Protect critical IT infrastructure
 - Provide real-time visibility and alerts



Slido poll

In which space would you like to focus first and make it smarter?

Select your answer.

Let's design together.



Smart Spaces Design Worksheet

A one-page quick reference guide to walk you through the key design areas of building a Cisco Meraki Smart Space solution:

1. Design qualification
2. Hardware selection
3. Technology partner selection



Download the PDF file at

<https://cs.co/smart-spaces-worksheet>

Smart Spaces Design Worksheet

Design Qualification

What are the challenges?

What types of technology solutions are needed?

☐ Safe Environments

☐ Smart Occupancy

☐ Marketing & Trends

☐ Investment Protection

☐ Access & Security

Which space type/persona does this opportunity most closely match?

☐ Office Space

☐ Commercial & Public Space

☐ Restricted

Does the area/environment have existing wireless network coverage? If so, which vendor's access points?

☐ No

☐ Yes

☐ Cisco (Aironet, Catalyst)

☐ Meraki (MR)

☐ Other Vendor

Hardware Selection

CAMERAS

Review [full portfolio & datasheets](#)

INDOOR	<input type="checkbox"/> MV2 compact form factor flexible mounting, 1080p, low cost, Cloud Archive storage	<input type="checkbox"/> MV12 series mini dome narrow or wide (73°-114°) FoV, 1080p, up to 256GB storage	<input type="checkbox"/> MV22 series varifocal dome 3x optical zoom, up to 4MP sensor, up to 1TB storage	<input type="checkbox"/> MV32 compact fisheye 360° immersive digital PTZ, 8.4MP sensor, 256GB storage
OUTDOOR	<input type="checkbox"/> MV52 long-range bullet 4K recording, 1TB onboard storage, IK10+/IP67 rated	<input type="checkbox"/> MV63 series mini dome 102° FoV, up to 4MP sensor, up to 1TB onboard storage, IK10+/IP67 rated	<input type="checkbox"/> MV72 series varifocal dome 3x optical zoom, up to 4MP sensor, up to 512GB onboard storage, IK10+/IP67 rated	<input type="checkbox"/> MV93 series compact fisheye 360° immersive, up to 12.4MP sensor, up to 1TB storage, IK10+/IP67 rated

SENSORS

Review [full portfolio & datasheets](#)

<input type="checkbox"/> MT10 temperature and humidity temperature range: 0°-55°C humidity range: 0%-95% RH	<input type="checkbox"/> MT11 temperature probe temperature range: -40°C to 55°C multiple probe options	<input type="checkbox"/> MT12 water leak detection multiple leak detection options, IPX5 rated	<input type="checkbox"/> MT14 air quality monitoring monitor PM2.5, TVOC, temperature (0°-55°C), humidity (0%-95% RH), noise (20-120 dBA)	<input type="checkbox"/> MT20 open/close detection magnetic field sensor, flexible mounting options	<input type="checkbox"/> MT30 smart automation flexible mounting options, IP55 rated
--	--	--	---	---	--

Technology Partner Selection

SOLUTIONS

Browse all [Meraki Marketplace categories](#)

Analytics <div><div><input type="checkbox"/> Custom CV</div><div><input type="checkbox"/> Footfall Analytics</div><div><input type="checkbox"/> License Plate Reader</div><div><input type="checkbox"/> Video Analytics</div></div>	Hybrid Work <div><div><input type="checkbox"/> Flex Office</div><div><input type="checkbox"/> Hot-desking</div><div><input type="checkbox"/> Next-Gen Campus</div></div>	Safe Environments <div><div><input type="checkbox"/> Contactless Engagement</div><div><input type="checkbox"/> Contact Tracing</div><div><input type="checkbox"/> Safe Occupancy</div><div><input type="checkbox"/> Security Monitoring</div></div>	Smart Spaces <div><div><div><input type="checkbox"/> Access Control</div><div><input type="checkbox"/> Asset Tracking</div><div><input type="checkbox"/> Building Management System</div><div><input type="checkbox"/> Digital Signage</div></div><div><div><input type="checkbox"/> Loss Prevention</div><div><input type="checkbox"/> Smart Workplace Solutions</div><div><input type="checkbox"/> Wayfinding & Mapping</div></div></div>
---	--	---	---

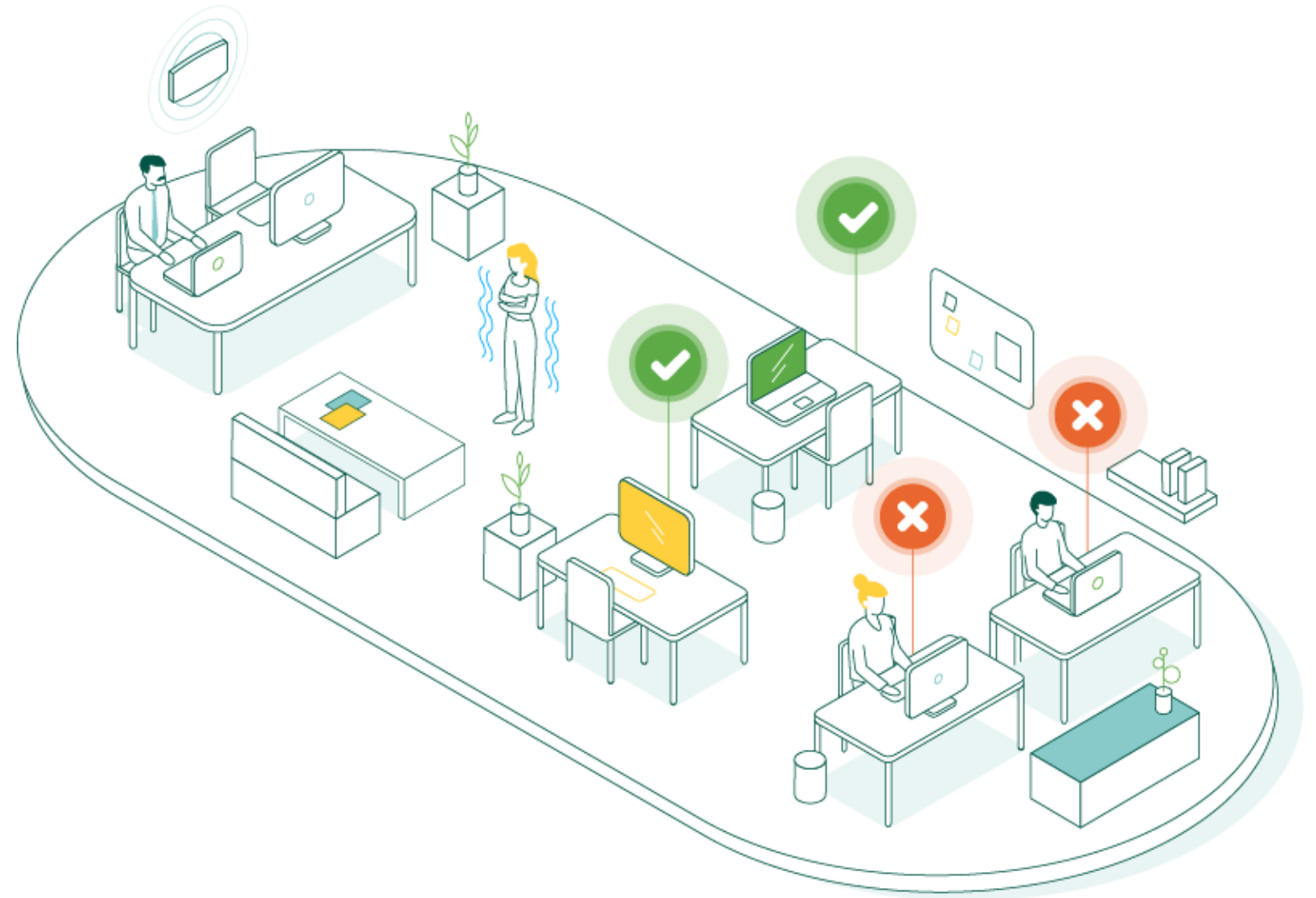
Which Meraki ecosystem technology partner(s) would be a good fit?

© 2022 Cisco Meraki and/or its affiliates. All rights reserved.

Scenario

SITUATION:

- This company is in the middle of adopting hybrid work for their workplace strategy—during the rollout, they need to know that each office workspace is being used efficiently
- Their main priorities are comfort and productivity for employees that work in the building
- They would also like to address complaints about their wireless coverage and inadequate speeds



Scenario

CHALLENGES:

Efficient
workspace use

Employee
productivity

Comfort

Wireless coverage

RECOMMENDED DESIGN:

- Meraki **MR Wi-Fi 6** access points
- **MV12 series** or **MV22 series** indoor dome cameras (also **MV32** compact fisheye)
- **MT14** air quality sensors or **MT10** temperature/humidity sensors
- Technology partner solutions: **flex office**, **hot-desking**

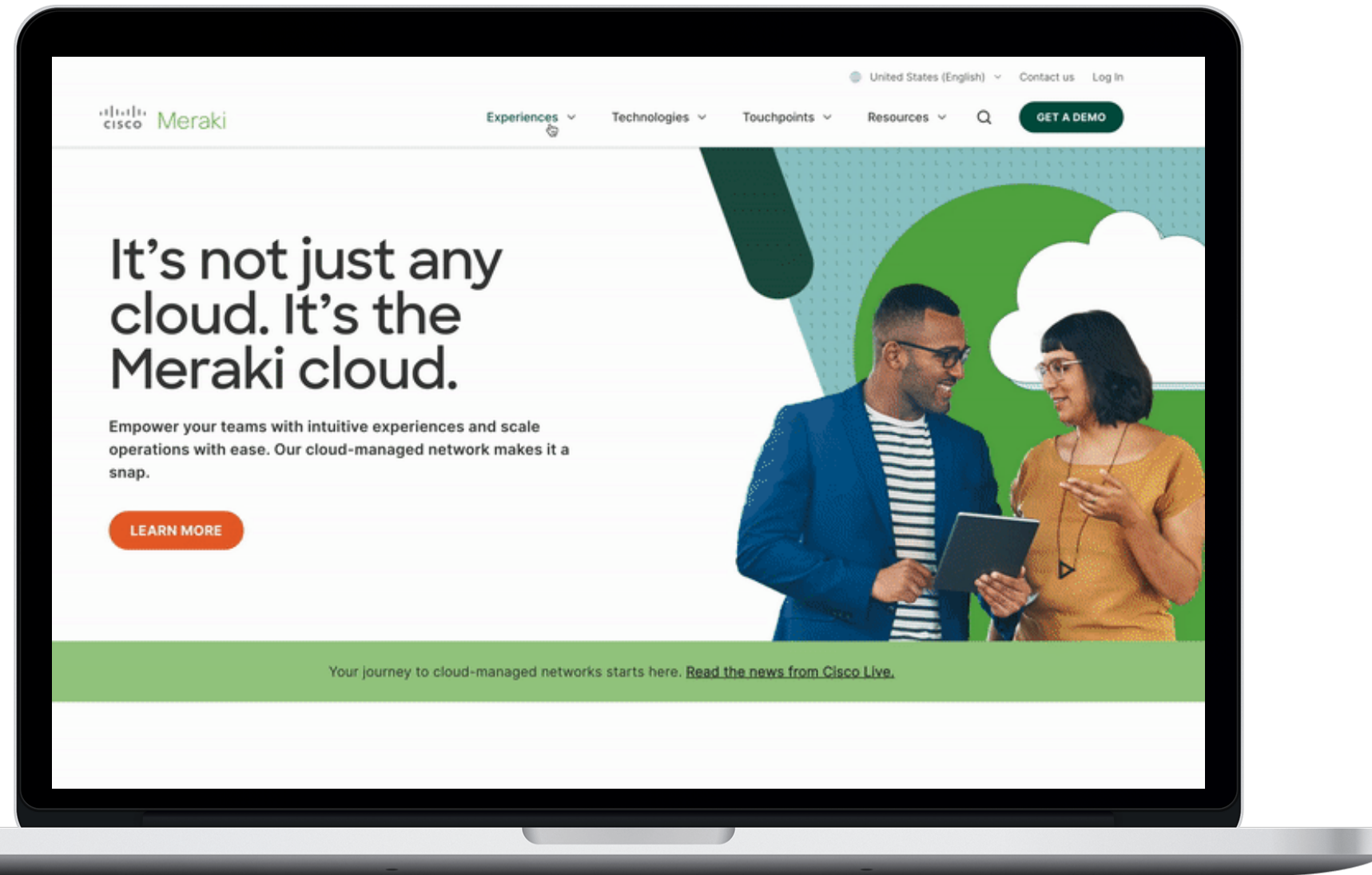
Office Space



Initiating a Smart Space project



Meraki.com



Experiences > Learn More

What's here...

'Microsites' that cover different experiences with supporting customer-facing whitepapers, reports, case studies, infographics, and product overviews

Highlights

- Smart spaces microsite
- Safe workspace microsite
- Physical security microsite

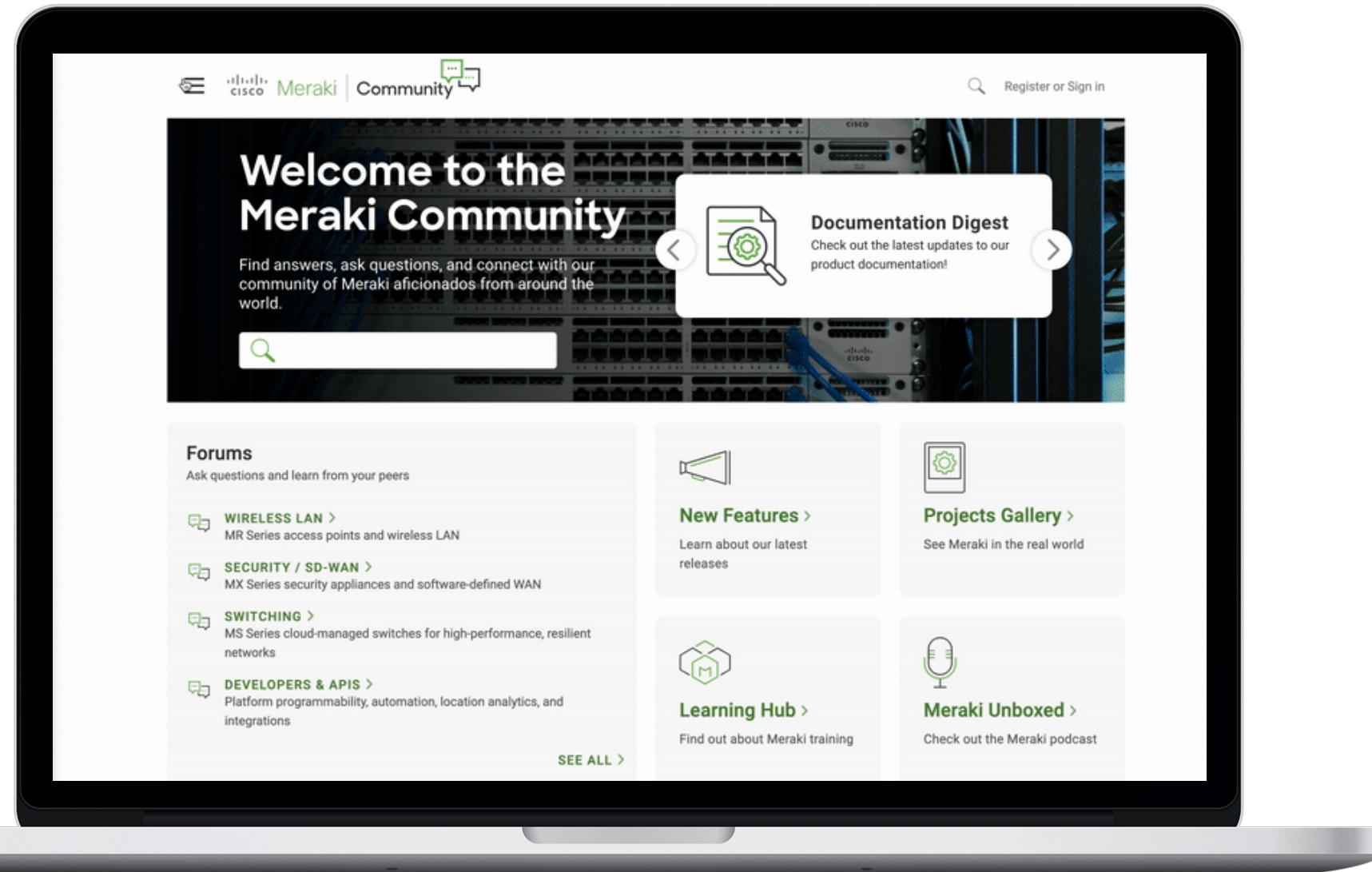
Marketplace Announcements (Community)

What's here...

Page within the Meraki Community frequently updated by the Meraki team to spotlight the newest additions to the Meraki Marketplace

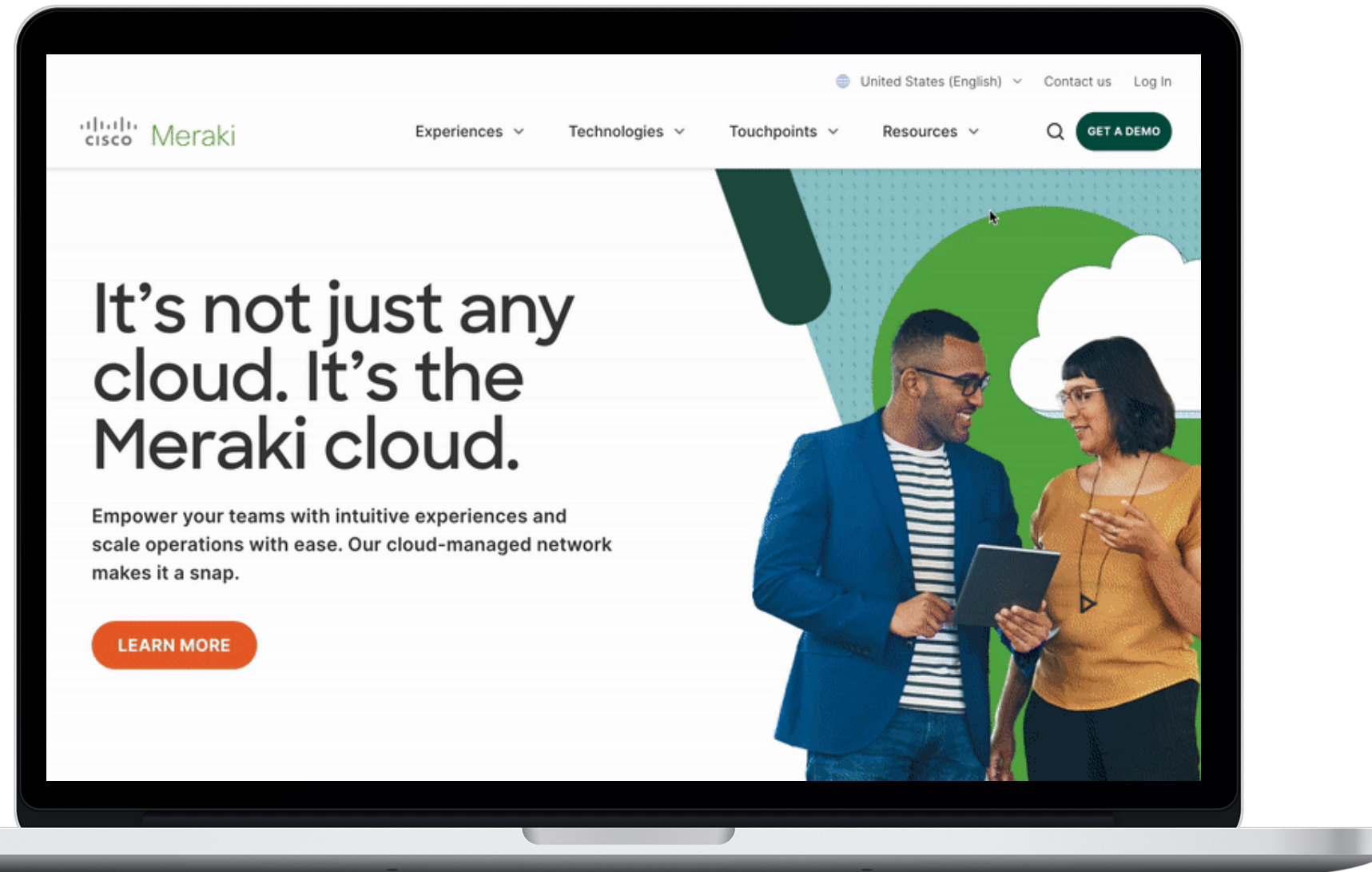
Highlights

- Register for Meraki events: upcoming virtual webinars, in-person events, and even competitions
- Blog posts & monthly app round up: highlights and write-ups posted for quick reference and easy reading



Community > Marketplace Announcements

Meraki webinars



Resources > Webinars > Smart Spaces

What's here...

Live webinar sessions and recordings of past events on-demand (many conducted in other languages)

Highlights

Select the "Solution" drop-down filter and check the box for the following:

- ✓ Hybrid Workforce
- ✓ Safe Environments
- ✓ Smart Spaces

Meraki free trials

Customers can **test Cisco Meraki products** fit for their **needs** at no charge.





Did you know...

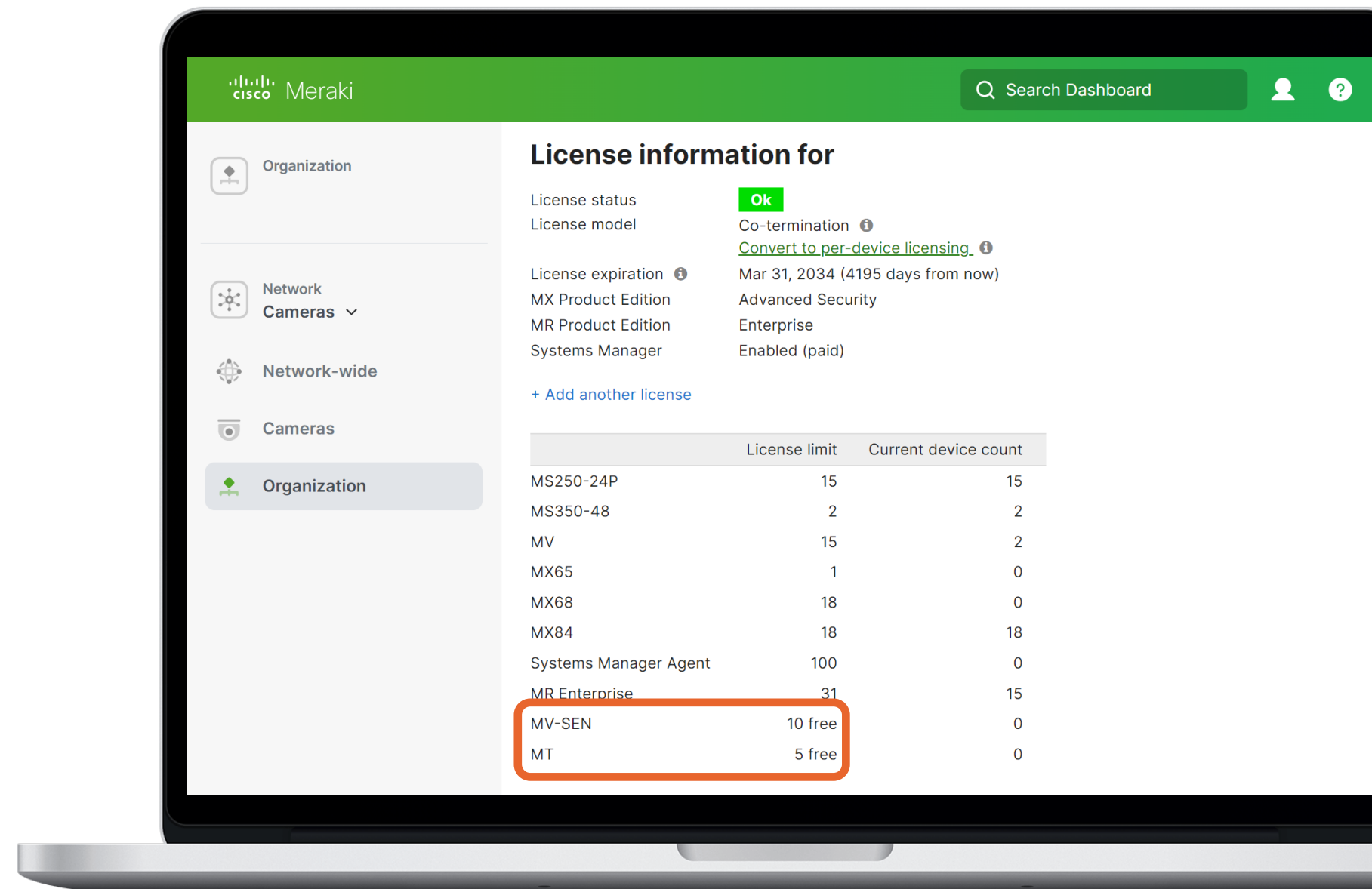
**that you may already have unused MV
Sense and MT licenses in your
organization today?**

10 free MV Sense licenses

(any organization with 2nd generation cameras)

5 free MT licenses

(all organizations)



Organization > License Info



Thanks for designing with us today.

Join our **Slido Quiz!**

Passcode: **merakismart2023**



Want to know more about other free **Meraki Trainings?**

Reach out to us at:

certifications@meraki.com

